

R K SARDA VIDYA ASHRAM

(Run under the Aegis of Shri RamKishore Sarda Seva trust)
Affiliated to C.B.S.E (Affiliation No.3330369)



Summer Vacation Home Assignment 2023-24

Class – VIII

*Summer is messy
, Summer is fun,
Trips to the beach,
In the hot, hot Sun,
Let's give summer,
A big fat cheer!*

Summer is the best time of the year.

Dear Parent,

We wish you and your child a very happy summer holidays. It's time to enjoy and relate a bond with family, friends and relatives. To utilize this time in the most constructive way we have prepared Holiday Homework for the students on the principle of 'learning by doing' for his /her holistic development.

Note:

- 1. Kindly make sure Summer Vacation Homework is written in the respective subject copy.**
- 2. This Homework is a part of Periodic Assessment – I as Subject Enrichment 5 – Marks.**

Subject wise work to be completed:

English:

Activity 1: To prepare a chart of homophones, synonyms and antonyms (at least 05)

Write an example sentence for each. You may also paste relevant pictures related to the words/ meanings/ example sentences

Activity 2: To read the novel of **Amish - The Scion of Ikshvaku** and prepare a skit within 200 words based on any plot/sub plot/the portion most liked (to be written in H/W notebook)

Hindi :

- गर्मियों की छुट्टी में की गई किसी यात्रा पर कम से कम 200 शब्दों का एक अनुच्छेद लिखें ,
इच्छा अनुसार किसी विषय पर एक कहानी या कविता लिखें

ADDRESS :
Old Dhamtari Road
Opp. Mujgahan Police station
Post - Sejbahar, Raipur
Chhattisgarh - 492 015

PHONE NO.
+91-9826717981
+91-6267020803

EMAIL
principal@rksva.org
admin@rksva.org

Sanskrit: शब्द रूप, धातु रूप , सर्वनाम रूप कारक चिन्ह विभक्ति सहित लिखें एवं याद करें और सुभाषितानि पाठ से कम से कम 2 श्लोक याद करें

Math:

1. Solve R.S. Agarwal Exercises 1A 1B 1C 1D and 1E, Exercises 8A 8B and 8C.

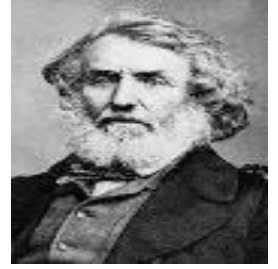
Activity : Name any three Indian mathematician and write their contributions in mathematics.

Science:

- Complete the attached worksheet
- Prepare the Model/Chart as directed in the worksheet
- Make the video of Activities as directed in the worksheet

Social Science:

- Complete all the given notes in respective notebooks.
- Suppose you have been elected to the drafting committee to draft the Indian constitution. You have been given the responsibility of designing the cover of the constitution. Create an attractive cover for the constitution in your notebook. You can use motifs, patterns, colours and fonts of your choice. You may design it according to a particular theme, such as diversity. Be as creative as you can. Show your masterpiece to the entire class.
- This is a photograph of Colonel George Everest, who served as the surveyor -General of India from 1830-1843. Mount Everest, the highest mountain on earth, is named after him. Make a PowerPoint presentation highlighting his association with Mount Everest.
- Draw a world map. Show the sea route to India via the cape of good hope. Also mark some important port cities of mediaeval times.



Computer: Activity based worksheet will be uploaded in Quick School ERP. Take the printout and do as directed.

Art: Do Colouring in the Drawing book MAGIC WITH COLOURS page no.: 11 , 13 , 16 , 18 , 20 ,21 , 26 , 36 , 39 , 46 , 48

Note : Do Page number 27 and 39 on a separate thick A4 size drawing sheet.

Music: Make A video of singing a school prayer and national song in school uniform.

Dance:- 1. Make a video of folk dance of any state with costume.
2. Learn all type of hand gestures (28 single and double 23 hand gestures) and make a video of it. Refer the given link for practice. <https://youtu.be/bi5oVX0Sp9s>
<https://youtu.be/hsfg1FLnPsE>

P.E. Do a Video on sitting and standing Asanas, copy it in a pen drive for submission and make a scrapbook on different Asanas with their benefits.

Note: Take a pen drive save it with your name, class and store all the videos of home assignment.

ADDRESS :
Old Dhamtari Road
Opp. Mujgahan Police station
Post - Sejbahar, Raipur
Chhattisgarh - 492 015

PHONE NO.
+91-9826717981
+91-6267020803

EMAIL
principal@rksva.org
admin@rksva.org



R K SARDA VIDYA ASHRAM
SUMMER VACATION WORKSHEET

Class : VIII Subject: Science

Roll No. _____

Name _____

PHYSICS

PHYSICS

1. Define Force
2. Write difference between
 - a. Contact Force & Non-Contact Force
 - b. Balanced & Unbalanced Force
3. Write the effect of forces on an object?
4. Complete the Activity 8.1 (Identifying Actions as Push or Pulls) and Activity 8.5 (Studying the effect of Force on Objects)

CHEMISTRY

1. What is the 5R principle?
2. Prepare a list of biodegradable and non biodegradable materials.
3. Write three differences between thermoplastics and thermosetting plastics.
4. Why is melamine used for coating the uniforms of fire fighters?
5. Write two uses of each of the following synthetic fibres.
Rayon, Nylon, Terylene, Acrylic, PET
6. Define the following terms-
 - a. Monomers, polymer, polymerisation
7. Match the column-A with column-B

COLUMN-A	COLUMN-B
a) Rayon	i) VC
b) Nylon	ii) artificial silk
c) Bakelite	iii) Parachutes
d) monomer of PVC	iv) electrical switch

8. Write four characteristics of synthetic fibres.
9. How do plastic materials pollute the environment?
10. 'Rayon is considered as regenerated fibre'--why?

BIOLOGY

1. Describe the types of crops.
2. Make the table for manure and fertilizer.
3. Why is crop rotation important?
4. Define the key words of the chapter crop production and management.
5. Explain the types of microorganisms.

Model Making/ Chart Making / Other Activities

PHYSICS

Complete the following Extended Activities

1. (Make Video of this Activity and bring it in a pen drive)

Comparison of Pressure Exerted by the stool in two different situations

- Make a 50 cm × 50 cm bed of dry sand about 10 cm in thickness. Make sure that its top surface is levelled.
- Take a wooden or a plastic stool.
- Cut two strips of graph paper each with a width of 1 cm. Paste them vertically on any leg of the stool - one at the bottom and the other from the top.
- Now gently put the stool on the sand bed with its legs resting on the sand. Increase the size of sand bed if required.
- Now put a load, say a school bag full of books, on the seat of the stool.
- Mark the level of sand on the graph strip. This would give you the depth, if any, to which the legs of stool sink in sand.
- Next, turn the stool upside down so that now it rests on its seat on the sand bed. Note the depth to which the stool sinks now.
- Next, put the same load on the stool and note the depth to which it sinks in the sand.
- Compare the pressure exerted by the stool in the two situations.

2. (Make Video of this Activity and bring in a pen drive)

Take a tumbler and fill it with water. Cover the mouth of the tumbler with a thick card similar to that of a postcard. Hold the tumbler with one hand while keeping the card pressed to its mouth with your other hand. Turn the tumbler upside down while keeping the card pressed to its mouth. Make sure that the tumbler is held vertical. Gently remove the hand pressing the card. What do you observe? Does the card get detached allowing the water to spill? With a little practice you will find that the card continues to hold water in the tumbler even after it is not supported by your hand. Also try this activity by using a piece of cloth to hold the tumbler in an upside down position (Fig. 8.21).



Fig. 8.21

3. (Make this model and show it after holidays)

Take 4-5 plastic bottles of different shapes and sizes. Join them together with small pieces of glass or rubber tube as shown in Fig. 8.22. Keep this arrangement on a level surface. Now pour water in any one of the bottles. Note whether the bottle in which water is poured gets filled first or all the bottles get filled up simultaneously. Note the level of water in all the bottles from time to time. Try to explain your observations.

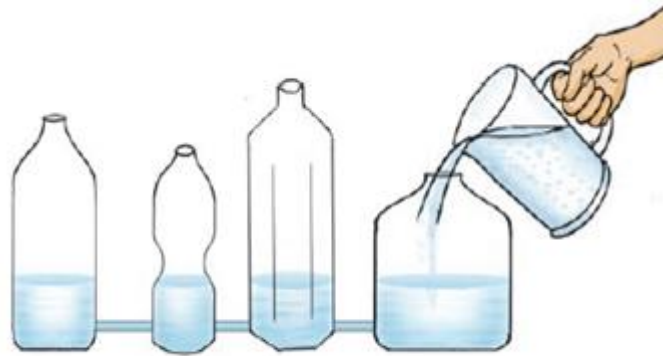


Fig. 8.22

CHEMISTRY

1. Prepare a chart of Exhaustible and inexhaustible sources of energy.
2. Preparation of a soda-acid fire extinguisher (Bring the model after summer vacations)
3. Get an outline map of India. Mark the places in the map where coal, petroleum and natural gas are found, show the places where petroleum refineries are situated.

BIOLOGY

1. Make a chart of beneficial microorganisms and harmful microorganisms along with their diagram. (From roll n. 1 to 6)

Draw the figure of microorganism separately on the chart and label it.

Mention the name of the microorganism and explain the function like they are disease causing or beneficial.

2. Get an outline map of India representing the tiger reserve and national park: (from roll no 7 to 15).

Draw the India map on chart paper and mark the place.

Find at least 3 tiger reserve/national park/wildlife sanctuaries.

Mark at least 20 tiger reserve /national park/wildlife sanctuaries.



R K SARDA VIDYA ASHRAM
SUMMER VACATION WORKSHEET
Class : 8 Subject: Computer

Roll No. _____ Name _____

1. Write any four advantages of networking -

a)	
b)	
c)	
d)	

2. Choose the correct option and encircle it -

a)	Wireless technology used to interconnect devices using short-range connection	Bluetooth	Ethernet
b)	Computer network restricted to an organization	Intranet	Extranet
c)	Central point of connection of all computers on a network	Router	Hubs
d)	Access point having wireless antenna for increasing communication range	Router	Hubs
e)	Security to provide privileges to perform operations on data within the network	Login Security	Rights Security
f)	Computer providing services and control access of resources to other computers in a network	Client	Server

3. Match the following – Column A

1) Network Card

2) Modem

3) Networking
Cable

4) Topology

5) Router

6) Bluetooth

Column B

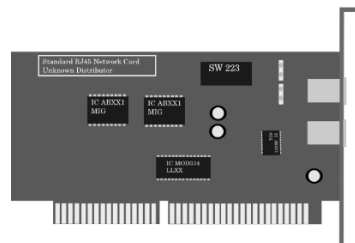
a)



b)



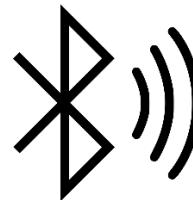
c)



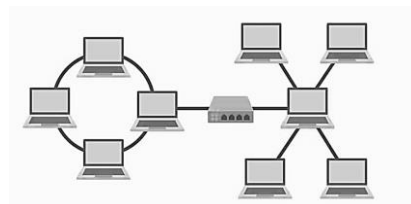
d)



e)



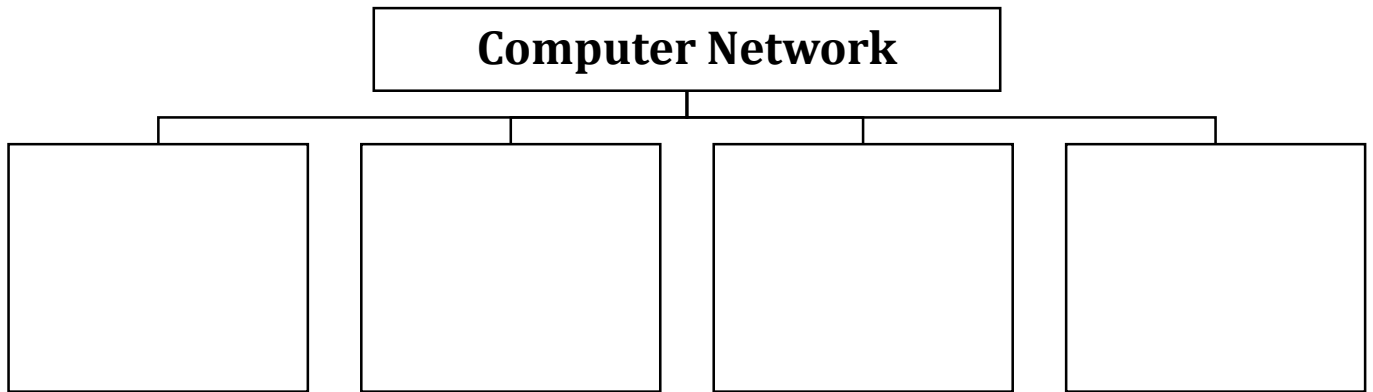
f)



4. Draw and name the types of network topologies-

	Name	Structure
a)		
b)		
c)		
d)		
e)		
f)		

5. Complete the classification of computer network based on the geographical areas covered by them. Write full forms of the types -



6. Write the types of networking architecture and draw them -

